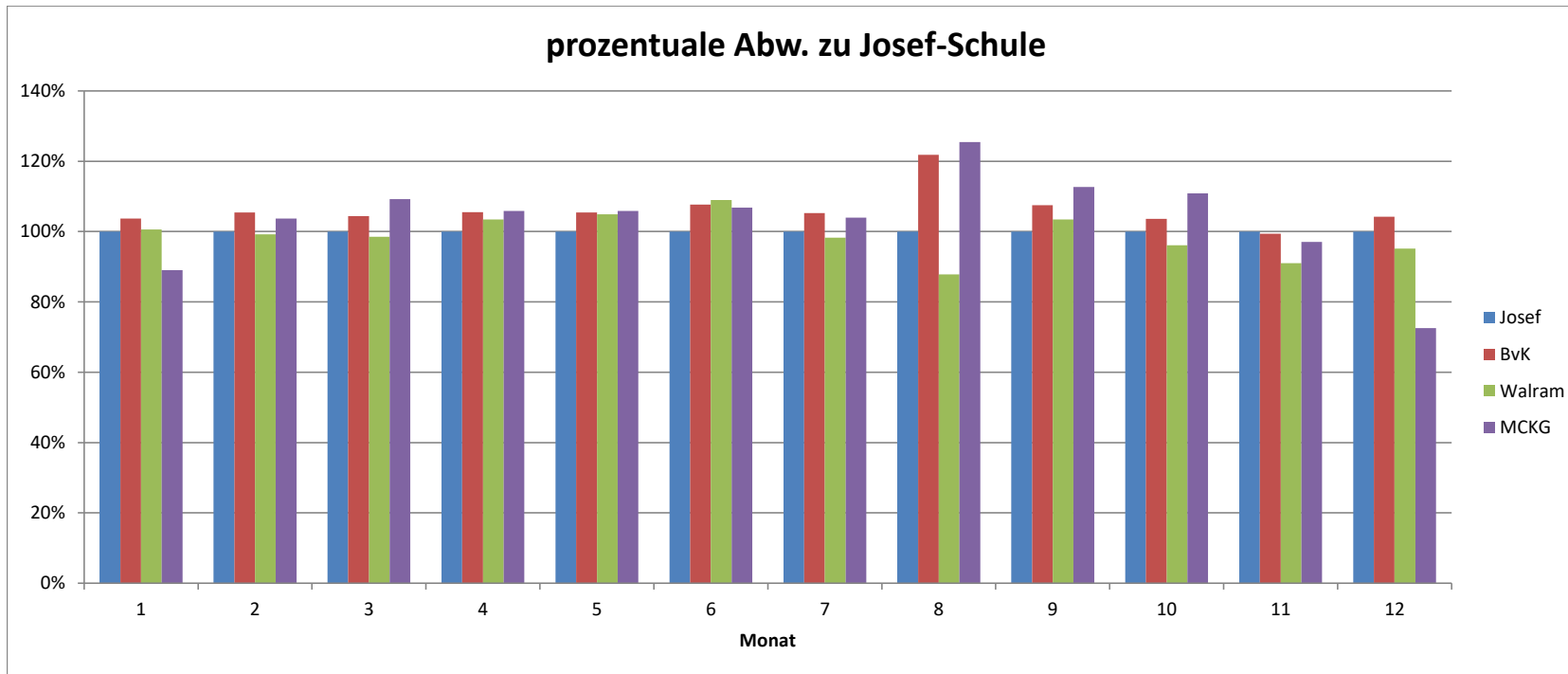


Jahr 2015

Summe von kWh/kWp Monat	PV-Anlage			
	Josef	BvK	Walram	MCKG
1	19,19	19,90	19,30	17,08
2	52,88	55,75	52,48	54,81
3	76,39	79,78	75,27	83,41
4	125,16	132,07	129,52	132,53
5	133,33	140,54	139,87	141,16
6	132,84	142,99	144,72	141,86
7	131,74	138,69	129,48	136,93
8	105,59	128,60	92,68	132,51
9	79,29	85,22	81,99	89,37
10	58,05	60,17	55,79	64,36
11	31,33	31,13	28,51	30,39
12	25,76	26,84	24,52	18,69
Gesamtergebnis	971,54	1041,67	974,13	1043,10



Jahr 2015

Monat	prozentuale Abw. zu Josef-Schule			
	Josef	BvK	Walram	MCKG
1	100%	103,67%	100,57%	89,00%
2	100%	105,44%	99,26%	103,67%
3	100%	104,43%	98,52%	109,19%
4	100%	105,52%	103,48%	105,89%
5	100%	105,41%	104,91%	105,87%
6	100%	107,65%	108,94%	106,79%
7	100%	105,27%	98,28%	103,94%
8	100%	121,80%	87,78%	125,50%
9	100%	107,48%	103,41%	112,71%
10	100%	103,64%	96,10%	110,87%
11	100%	99,36%	91,01%	97,03%
12	100%	104,20%	95,18%	72,53%
Gesamtergebnis	100%	107,22%	100,27%	107,37%