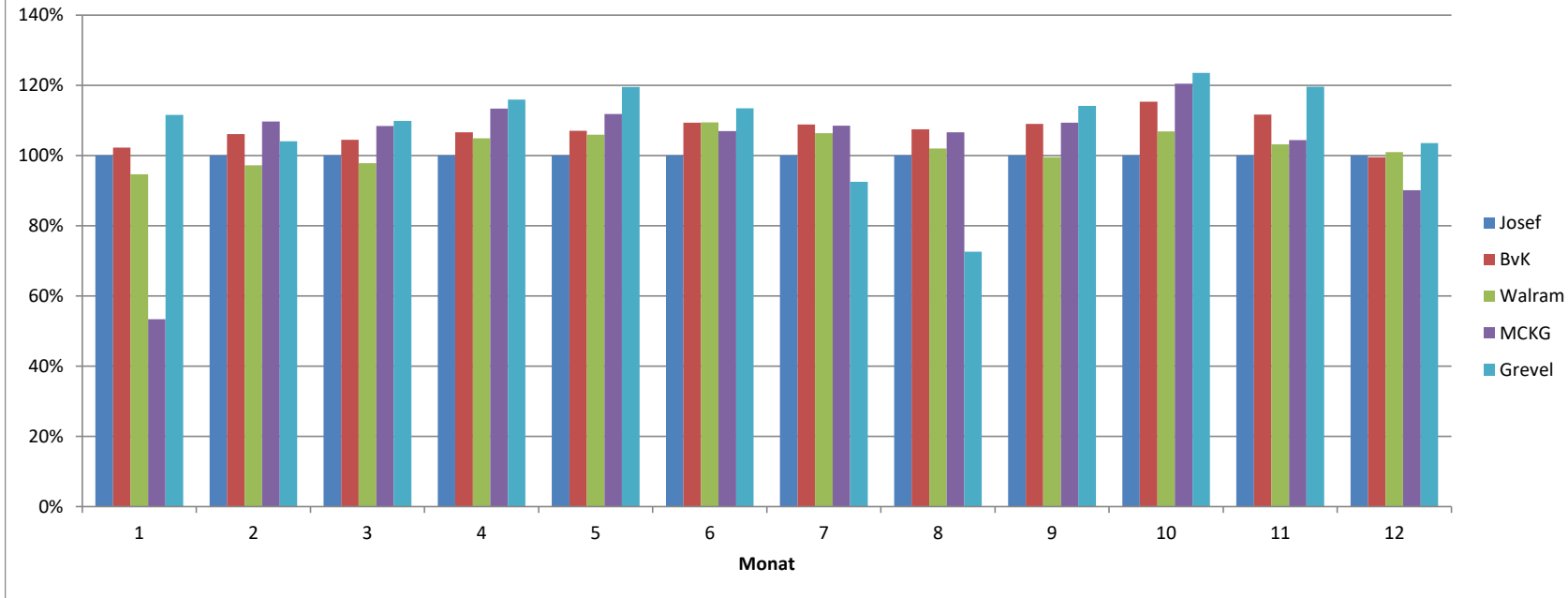


Jahr 2017

Summe von kWh/kWp	PV-Anlage				
Monat	Josef	BvK	Walram	MCKG	Grevel
1	28,01	28,63	26,50	14,94	31,24
2	38,75	41,11	37,68	42,48	40,31
3	86,65	90,51	84,71	93,94	95,15
4	94,97	101,20	99,57	107,68	110,05
5	122,38	130,98	129,64	136,80	146,23
6	123,51	135,08	135,10	132,13	140,12
7	114,49	124,61	121,78	124,22	105,90
8	104,05	111,81	106,12	110,95	75,49
9	80,92	88,17	80,50	88,50	92,32
10	45,47	52,45	48,57	54,76	56,14
11	19,45	21,71	20,06	20,30	23,26
12	8,26	8,22	8,33	7,44	8,55
Gesamtergebnis	866,91	934,47	898,57	934,13	924,77

prozentuale Abw. zu Josef-Schule



Jahr 2017

Monat	Josef	BvK	Walram	MCKG	Grevel
1	100%	102,24%	94,64%	53,35%	111,55%
2	100%	106,09%	97,23%	109,64%	104,03%
3	100%	104,46%	97,76%	108,41%	109,81%
4	100%	106,56%	104,85%	113,38%	115,88%
5	100%	107,02%	105,93%	111,78%	119,49%
6	100%	109,36%	109,38%	106,97%	113,45%
7	100%	108,84%	106,37%	108,50%	92,50%
8	100%	107,45%	101,99%	106,63%	72,55%
9	100%	108,95%	99,48%	109,36%	114,08%
10	100%	115,34%	106,82%	120,43%	123,47%
11	100%	111,65%	103,14%	104,39%	119,59%
12	100%	99,53%	100,93%	90,11%	103,55%
Gesamtergebnis	100%	107,79%	103,65%	107,75%	106,67%