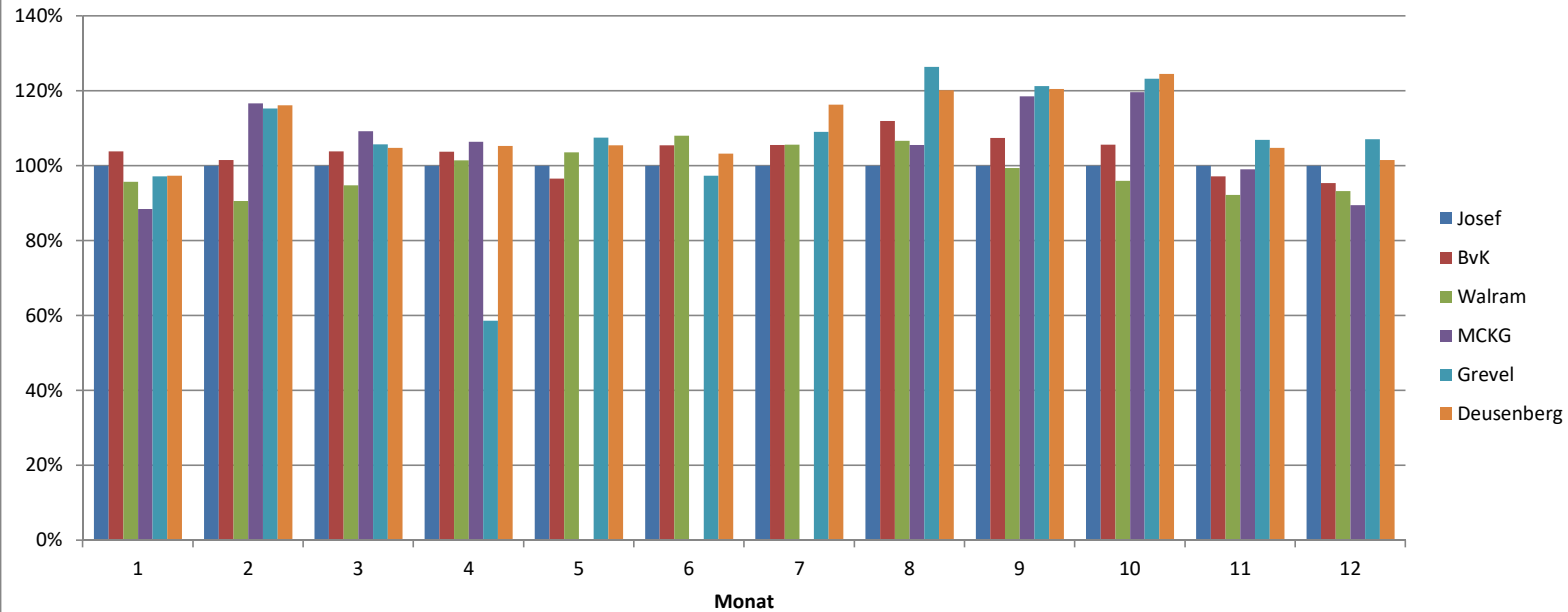


Jahr 2018

Monat	Summe von kWh/kWp PV-Anlage					
	Josef	BvK	Walram	MCKG	Grevel	Deussenberg
1	18,40	19,11	17,61	16,27	17,88	17,91
2	59,44	60,34	53,85	69,32	68,52	69,03
3	80,93	84,08	76,73	88,39	85,55	84,84
4	112,21	116,47	113,89	119,39	65,84	118,13
5	145,46	140,44	150,65	0,00	156,43	153,48
6	120,00	126,52	129,62	0,00	116,80	123,91
7	143,16	151,09	151,24	0,00	156,18	166,51
8	115,79	129,67	123,48	122,19	146,38	139,14
9	89,60	96,28	89,10	106,25	108,64	107,95
10	62,18	65,72	59,70	74,42	76,64	77,44
11	34,49	33,52	31,81	34,16	36,89	36,15
12	13,41	12,80	12,51	12,01	14,37	13,62
Gesamtergebnis	995,05	1036,04	1010,19	642,41	1050,13	1108,12

prozentuale Abw. zu Josef-Schule



Jahr 2018

Monat	Josef	BvK	Walram	MCKG	Grevel	Deussenberg
1	100%	103,89%	95,74%	88,47%	97,22%	97,38%
2	100%	101,53%	90,61%	116,63%	115,28%	116,15%
3	100%	103,89%	94,81%	109,23%	105,72%	104,84%
4	100%	103,80%	101,50%	106,40%	58,68%	105,28%
5	100%	96,55%	103,57%	0,00%	107,54%	105,51%
6	100%	105,44%	108,02%	0,00%	97,34%	103,26%
7	100%	105,54%	105,65%	0,00%	109,09%	116,31%
8	100%	111,99%	106,64%	105,53%	126,42%	120,16%
9	100%	107,46%	99,44%	118,59%	121,25%	120,49%
10	100%	105,69%	96,01%	119,68%	123,26%	124,54%
11	100%	97,20%	92,24%	99,05%	106,96%	104,83%
12	100%	95,43%	93,23%	89,54%	107,14%	101,56%
Gesamtergebnis	100%	104,12%	101,52%	64,56%	105,53%	111,36%