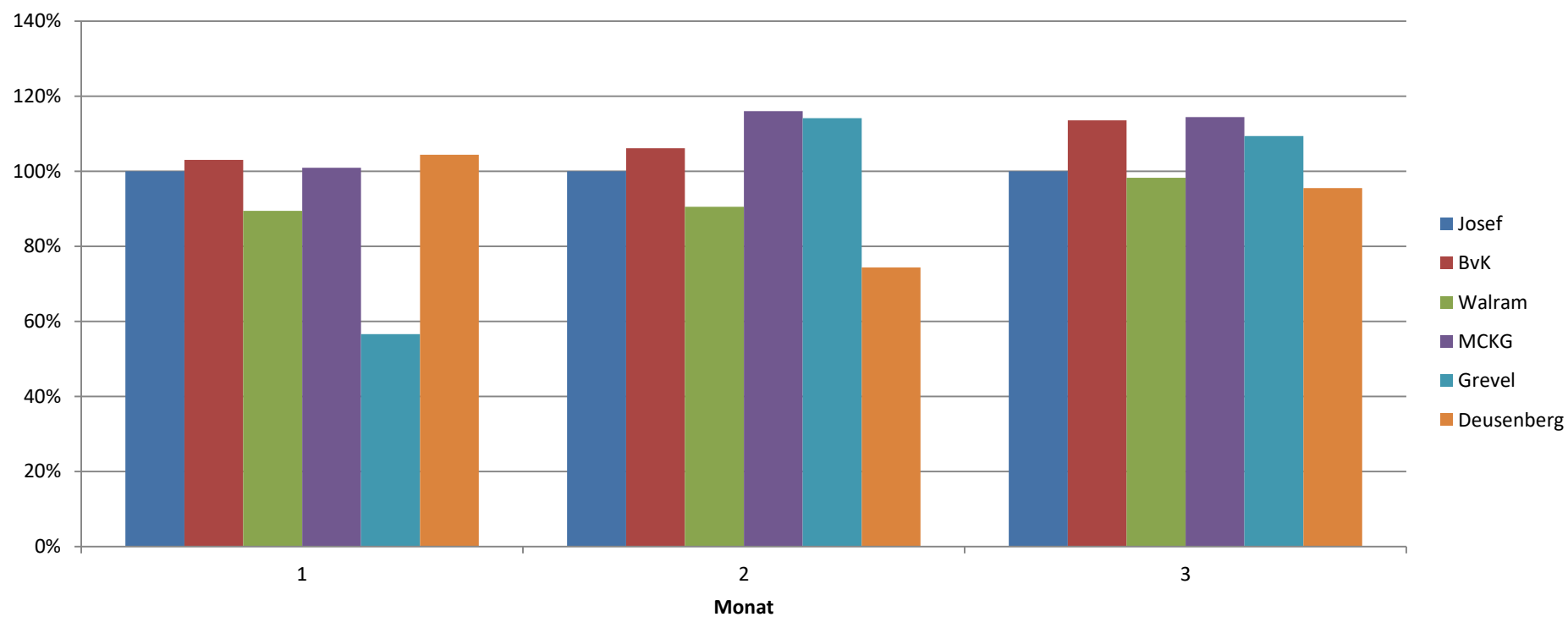


Jahr 2021

Summe von kWh/kWp Monat	PV-Anlage					
	Josef	BvK	Walram	MCKG	Grevel	Deussenberg
1	13,98	14,40	12,50	14,10	7,90	14,59
2	32,95	34,96	29,83	38,22	37,62	24,50
3	77,72	88,24	76,38	88,94	85,00	74,20
Gesamtergebnis	124,65	137,60	118,70	141,27	130,52	113,29

prozentuale Abw. zu Josef-Schule



Jahr 2021

Monat	Josef	BvK	Walram	MCKG	Grevel	Deussenberg
1	100%	103,03%	89,41%	100,91%	56,56%	104,36%
2	100%	106,10%	90,52%	115,99%	114,16%	74,35%
3	100%	113,54%	98,27%	114,44%	109,37%	95,47%
Gesamtergebnis	100%	110,39%	95,23%	113,33%	104,71%	90,89%