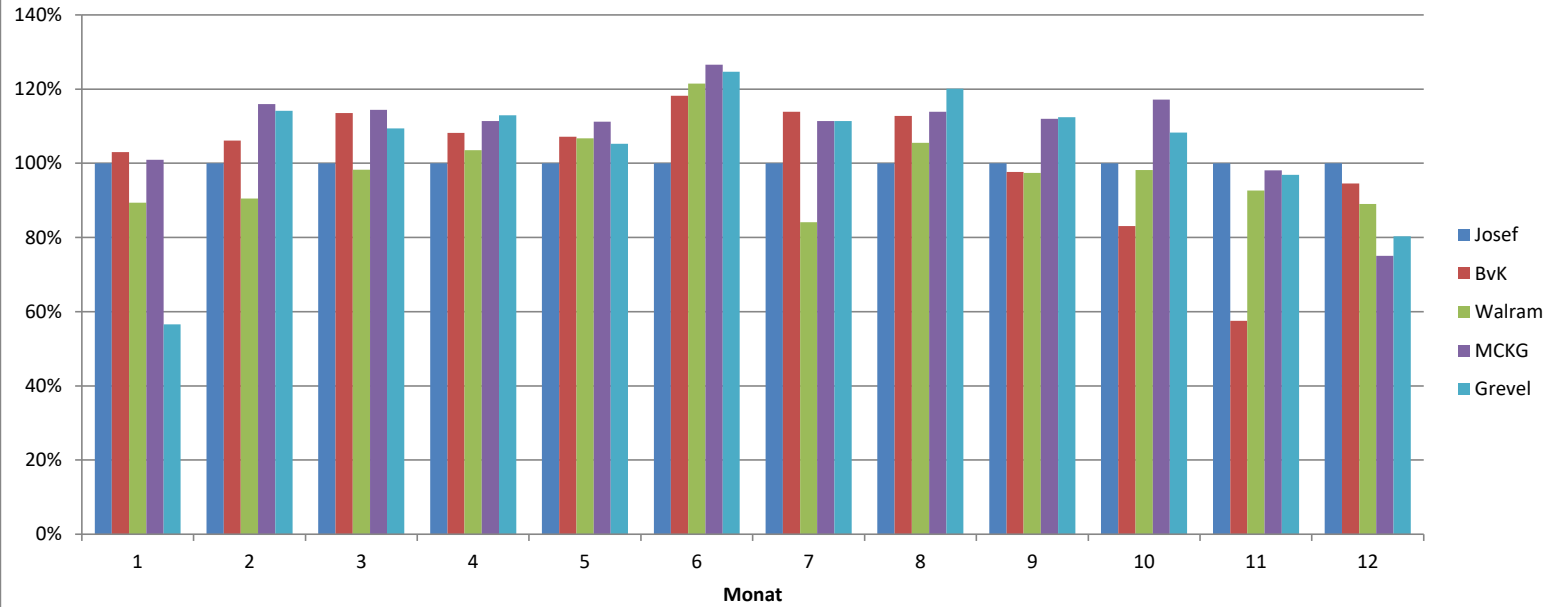


Jahr 2021

Summe von kWh/kWp Monat	PV-Anlage				
	Josef	BvK	Walram	MCKG	Grevel
1	13,98	14,40	12,50	14,10	7,90
2	32,95	34,96	29,83	38,22	37,62
3	77,72	88,24	76,38	88,94	85,00
4	100,32	108,50	103,83	111,70	113,27
5	113,23	121,35	120,82	125,88	119,18
6	110,75	130,88	134,53	140,14	138,06
7	104,99	119,60	88,31	116,91	116,96
8	90,67	102,28	95,67	103,29	108,89
9	87,78	85,70	85,53	98,32	98,66
10	56,23	46,73	55,21	65,87	60,86
11	25,65	14,76	23,78	25,16	24,87
12	17,72	16,75	15,77	13,30	14,23
Gesamtergebnis	831,99	884,15	842,17	941,83	925,50

prozentuale Abw. zu Josef-Schule



Jahr 2021

Monat	prozentuale Abw. zu Josef-Schule				
	Josef	BvK	Walram	MCKG	Grevel
1	100%	103,03%	89,41%	100,91%	56,56%
2	100%	106,10%	90,52%	115,99%	114,16%
3	100%	113,54%	98,27%	114,44%	109,37%
4	100%	108,15%	103,51%	111,35%	112,91%
5	100%	107,17%	106,71%	111,18%	105,26%
6	100%	118,18%	121,48%	126,54%	124,66%
7	100%	113,92%	84,12%	111,35%	111,41%
8	100%	112,79%	105,51%	113,91%	120,09%
9	100%	97,62%	97,44%	112,00%	112,38%
10	100%	83,11%	98,19%	117,13%	108,24%
11	100%	57,53%	92,69%	98,07%	96,93%
12	100%	94,55%	89,01%	75,06%	80,32%
Gesamtergebnis	100%	106,27%	101,22%	113,20%	111,24%