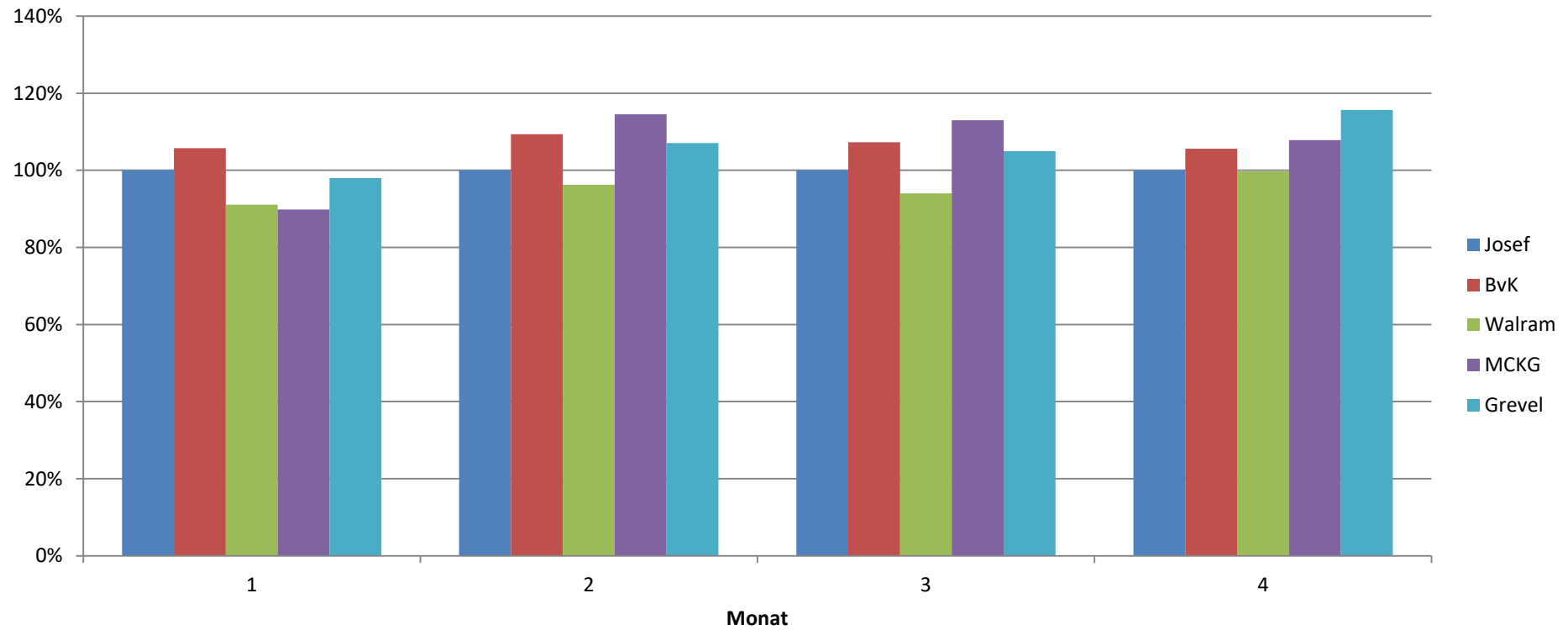


Jahr 2022

Monat	Summe von kWh/kWp PV-Anlage				
	Josef	BvK	Walram	MCKG	Grevel
1	15,88	16,79	14,47	14,26	15,56
2	38,27	41,85	36,84	43,83	40,98
3	113,43	121,71	106,69	128,21	119,12
4	102,24	107,98	102,01	110,28	118,24
<b>Gesamtergebnis</b>	<b>269,82</b>	<b>288,34</b>	<b>260,01</b>	<b>296,58</b>	<b>293,90</b>

## prozentuale Abw. zu Josef-Schule



Jahr 2022

prozentuale Abw. kWh/kWp	PV-Anlage				
Monat	Josef	BvK	Walram	MCKG	Grevel
1	100%	105,73%	91,11%	89,81%	98,00%
2	100%	109,37%	96,27%	114,53%	107,09%
3	100%	107,29%	94,06%	113,02%	105,01%
4	100%	105,62%	99,77%	107,86%	115,64%
<b>Gesamtergebnis</b>	<b>100%</b>	<b>106,86%</b>	<b>96,36%</b>	<b>109,92%</b>	<b>108,92%</b>